



DIGITAL HUMANITIES

BYU COLLEGE OF HUMANITIES

What Language Centers Can Teach
Digital Humanities Centers?

Message From Harold Hendricks

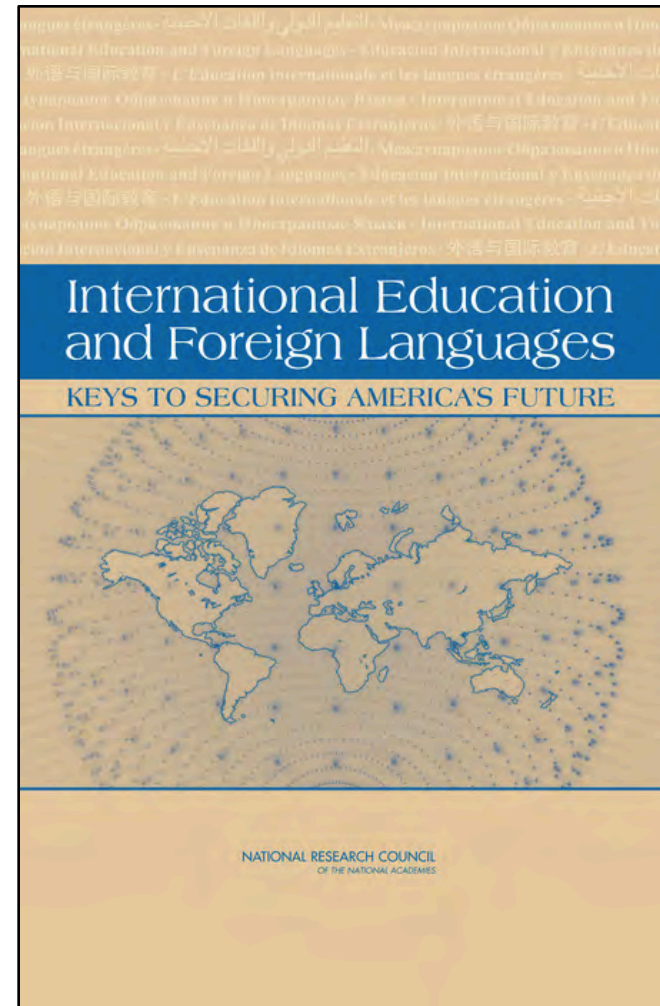
Dear SWALLT friends and colleagues. I am sorry to miss our regional family reunion due to conflicting conferences, especially because it has been some time since I've seen some of you in person. I will miss visiting over dinner and listening to the presentations, as well as greeting the new officers. I am pleased that Jeremy Browne is able to take my place representing BYU and I am certain his presentation will interestingly address the theme of this year's conference, due to his experience in both language learning and digital humanities. Have a wonderful conference and best wishes to you all.

My Language Background

- BA in French
- PhD in Instructional Psychology & Technology
- Mike Bush's NSEP Language Project
- National Middle East Language Resource Center
- Arabic Without Walls

Notable Language Publications

- *International Education and Foreign Languages: Keys to Securing America's Future*, The National Academies Press (2007)



Notable Language Publications

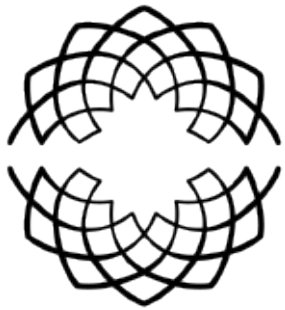
- Social Science Research Center: *Middle East Studies for the New Millennium: Infrastructures of Knowledge*, NYU Press (2016)

Since then...

- Five years in Department of Education at SUNY Brockport
- Four years coordinating the Digital Humanities and Technology Minor at BYU

What I've Learned

- Academia would do well to pay more attention to language teachers. They pioneered:
 - Multimedia instructional
 - Computer labs
 - The flipped classroom
 - And much more



DIGITAL HUMANITIES

BYU COLLEGE OF HUMANITIES

What Language Centers Can Teach
Digital Humanities Centers?

What is the Digital Humanities?

- <http://whatisdigitalhumanities.com/>

What is the Digital Humanities?

- <http://whatisdigitalhumanities.com/>
- “On the one hand, it’s bringing the tools and techniques of digital media to bear on traditional humanistic questions [and content]. But it’s also bringing humanistic modes of inquiry to bear on digital media.”
~Kathleen Fitzpatrick, 2013

DH is either...

Methods	Content
Humanities	Digital
Digital	Humanities

One Size Does Not Fit All

“There is no single model for the digital humanities center. Some focus on pedagogy. Others on research. Some build things. Others host things. Some do it all.”

Neil Fraistat, *Debates in the Digital Humanities*.

Some Common DH Center Models



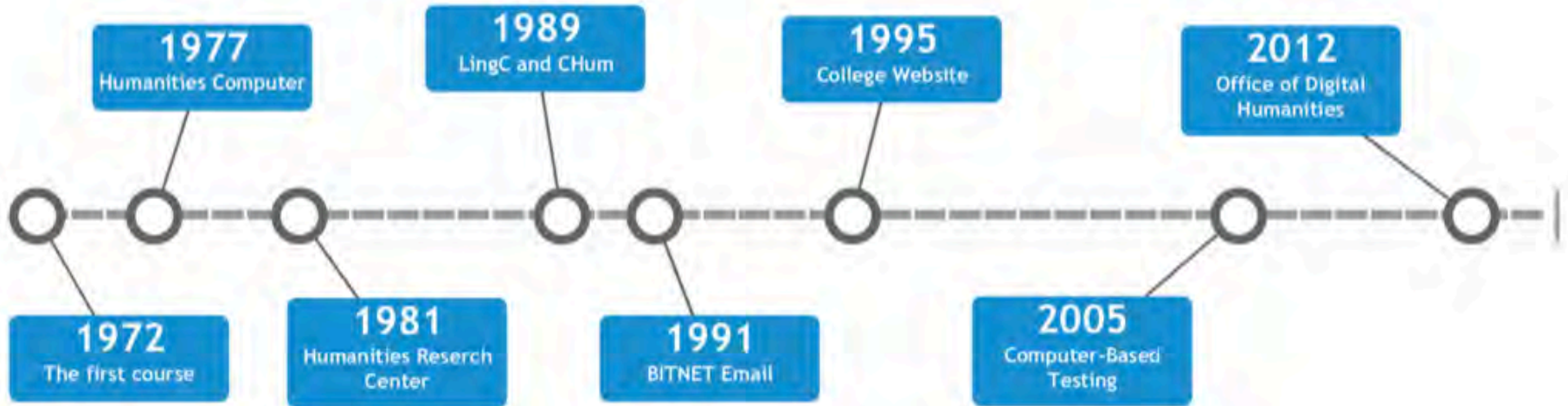
Gross Generalizations

	Library-Based	Department-Based
Staffing	Non-Professorial + Administrative	Professorial + Administrative
Service	Serves all departments.	Serves one department.
Resources	Shared	Dedicated
Resource Quantity	More	Less

How BYU is Different

	Library-Based	Department-Based	College/School-Based
Staffing	Non-Professorial + Administrative	Professorial + Administrative	Professorial + Administrative
Service	Serves all departments.	Serves one department.	Serves all departments.
Resources	Shared	Dedicated	Dedicated
Resource Quantity	More	Less	More

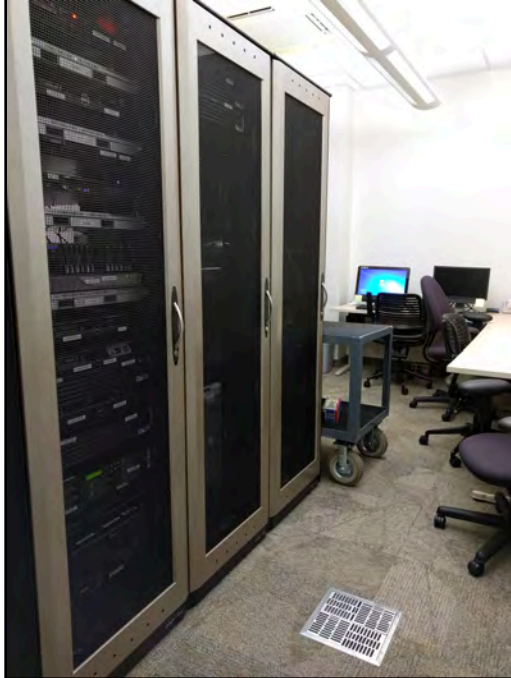
How did DH get to BYU?



- Language and research support have always been housed in the same department at BYU.












Why do they let us have this stuff?

- 1 office suite
- 1 server farm
- 1 recording studio
- 2 open computer labs + gaming lounge
- 2 large, 2 small conference rooms
- 5 small group rooms
- 1 video conference classroom
- 2½ computer lab classrooms
- 1 food service area + flex space
- 1 computer testing lab



Because its
available for
use by other
faculty

Office of Digital Humanities

Tuesday 17 November 2015

See Weekly Schedule Grid

<<Go To Previous Day

Go To Today

Go To Next Day>>

Time:	TELE Room B160(48) B160 JFSB	TELE Room B164(44) B164 JFSB	Macintosh Classroom(28) B181 JFSB	Windows Classroom(29) B013 JFSB	Collaborative Lab(24) B161 JFSB	DDH Conference Room(18) 1161 JFSB	Foreign Lang Activity Commons(45) B003 JFSB	Small Group Room 1131A(10) 1131A JFSB	Small Group Room 1133A(6) 1133A JFSB	Small Group Room 1133B(6) 1133B JFSB
08:00am	+	+	+	ELang 273	LING/DigHT 360 Lab Hours	+	+	+	+	+
09:00am	Greek 101	+	DIGHT 250	Ling 485	German 344	Greek 201 - Jeppesen	German Assessment	Classics 430R	+	+
10:00am	+	+	"	"	"	+	"	"	+	Hebrew 301
11:00am							DEV/FORUM	DEV/FORUM	DEV/FORUM	DEV/FORUM
12:00pm	+	iHum 350	DigHT 230	English 316	LING/DigHT 360 Open Lab	Art Hist 497	+	IPT 515R	FLANG 305	+
01:00pm	Cebuano 330	iHum 260	Spanish 378	English 326	"	"	+	"	+	Hebrew 101
02:00pm	"	"	"	"	"	+	Hawaiian Language	Kevin	+	+
03:00pm	+	+	+	DigHT 215	Spanish 380	Comp Stud 640	"	"	FLANG 101 Quechua	+
04:00pm	Spanish 105/6	Spanish 321	DigHT 230	"	+	"	Spanish 476	+	"	FLang 330R
05:00pm	SLAT 601/Spanish 671	"	"	DigHT 270	SLat 604/Ling 660	FLang 201 Hindi	"	+	FLANG 201 Quechua	"
06:00pm	"	+	+	"	LING/DigHT 360 Open Lab	"	+	+	"	"
07:00pm	+	+	+	+	"	"	Chinese Club	+	+	"
08:00pm	+	+	+	+	"	+	"	+	+	+

<<Go To Previous Day

Go To Today

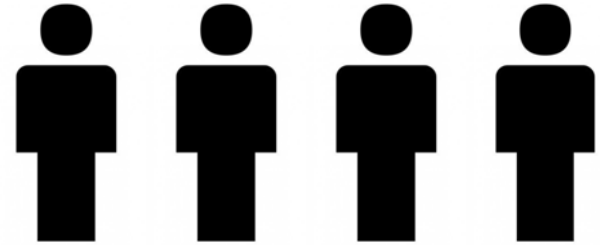
Go To Next Day>>

Print Preview

[Schedule and Booking](#)

Current Status: Faculty & Staff

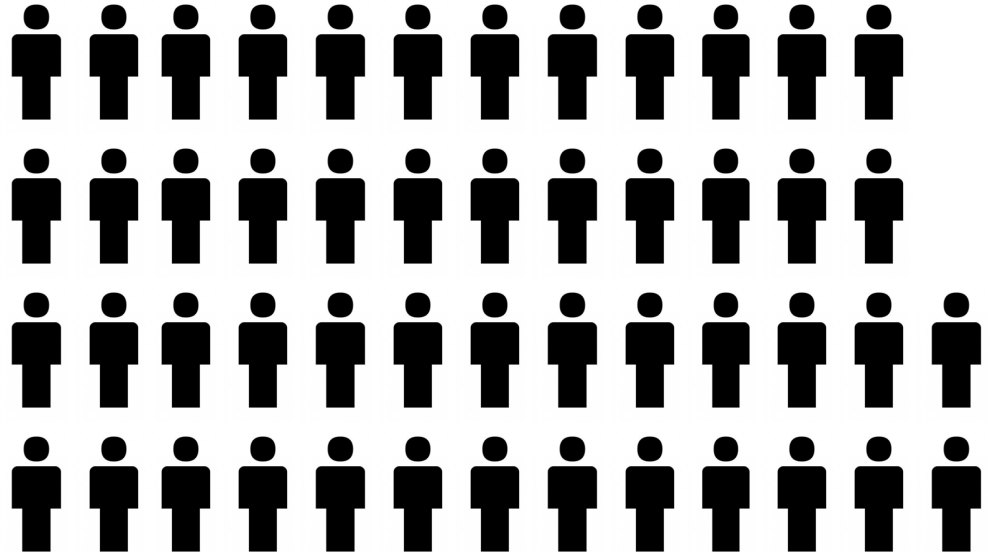
- Four research faculty



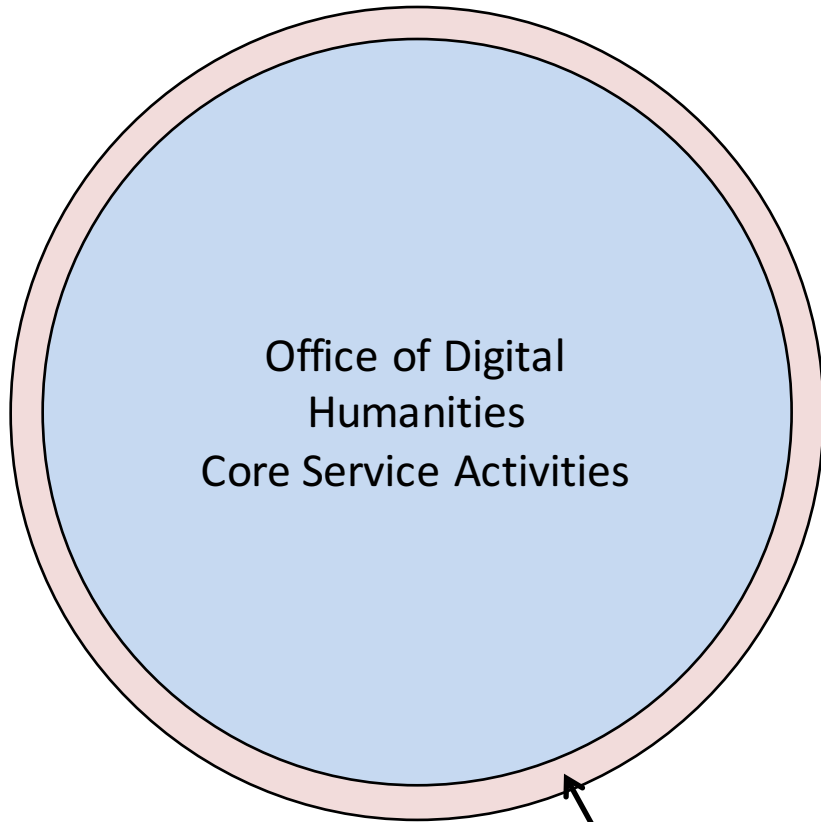
- Five administrative staff



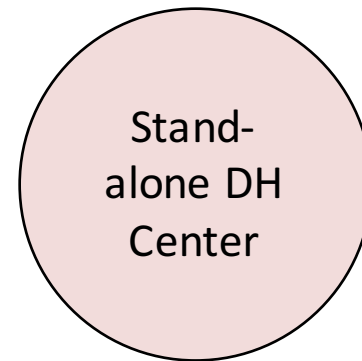
- 50+ student employees



Operating at the Margins



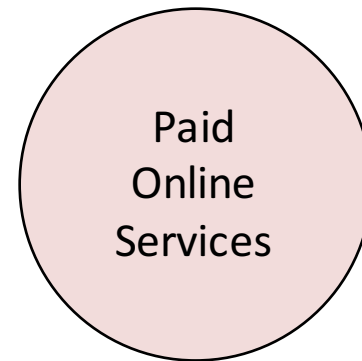
DH research and development at the margin



- Service
- Research & Development

Who else operates at the margins?

Google



Targeted Advertising

- Free Stuff
- Revenue-Generating

Current Status: Research

Project	Collaborators	Status
Victorian Short Fiction Project	English	Presented at DH 2015
Old Assyrian Commercial Network	History	Presented at DH 2015
Fairy Tale Teleology	English	Presented at DH 2015, American Folklore Society, 2015
Cormac McCarthy Corpus	English/Writing Center	Presented at McCarthy Society Conference 2015
Trinidad & Tobago Authorship Attribution	English	Presented at Caribbean Literature Conference 2015
Online Guide to Mythology in Art	Classics & Comp Lit, Oxford University Press	Starting up...

Current Status: Research

Project	Collaborators	Status
Automated German Vowel Evaluation	German	In use by faculty
Hum Media	College of Humanities	In use by foreign languages, philosophy, international cinema
Chinese Pronunciation & Romanization	Asian & Near Eastern Languages	In final testing
Frankenstein Adaptation Taxonomy	English	Presented March 2016
Essay Genome Project	English/Creative Writing	Presented at NonfictionNow 2015



DIGITAL HUMANITIES

BYU COLLEGE OF HUMANITIES

What Language Centers Can Teach
Digital Humanities Centers?

On Silos (Micro)

“Especially on campuses where there is an existing ‘traditional’ humanities center, digital humanities centers even run the risk of being silos on their own campuses if they don’t work actively at collaboration.”

On Silos (Macro)

“Since most [DH] centers are focused on their home institutions, they are at risk of becoming silos and that such institutional parochialism can inhibit the building of shared resources... where the impact of the shared resource is enhanced precisely because multiple parties contribute to and use it.”

On Service

“Tensions on campus can also exist when a center that aspires to be treated as a research unit is treated by administrators as a service unit instead, and the perceived divisions between ‘research’ centers and ‘service’ centers, in turn, create professional hierarchies that can inhibit the formation of potentially fruitful collaborations among centers.”

On Service

“The capacity of individual centers to produce such transformations is dependent on the degree to which its university administrators treat them as research units, valuing them ‘not because of the services they provide, but because of the culture they represent.’”

On Service

“Even the longstanding division in which a humanities faculty position is primarily equated with research while a staff position is equated with service is being altered in digital humanities centers, which are increasingly being staffed by a new kind of hybrid scholar with advanced degrees in the humanities and their own research agendas.”

Thank You

- Jeremy Browne
Coordinator of Digital Humanities Education
Brigham Young University
jeremy_browne@byu.edu